



COMPANY PROFILE



CONTENTS:

**INTRODUCTION –OUR VISION-MISSION STATEMENT- VALUES -
ORGANOGRAM-SERVICES-TARGET MARKET-SAFETY STATEMENT-QUALITY-
SOCIAL RESPONSIBILITY-CONTACTDETAILS**

INTRODUCTION

OUR CLIENTS FOCUS

Rockom Transport and Projects opened its doors 4 years ago from humble beginnings and was officially registered as PTY (LTD) Company in 2013. Our concentration is offering high quality services to the mining industry; offering services such as sampling of coal, Roving, Observing and Transportation.

Our chosen sector was encouraged by the area in which we are based and the identification of a gap of the services of our kind within this market. The company with 50% of its shares being owned by women is a South African based 100% BBBEE Status holder.

OUR TEAM

The **Rockom** members are dedicated in retaining business of their professional skill and high level of personal commitment to delivering a superior service and product to clients'.

PHILOSOPHY

We believe human development to be the worthiest of goals of civilisation and independence to be the superior conditions for nurturing growth in the capabilities of people.



OUR VISION

We aim to be the most competitive and the most productive service organization in South Africa.

MISSION STATEMENT

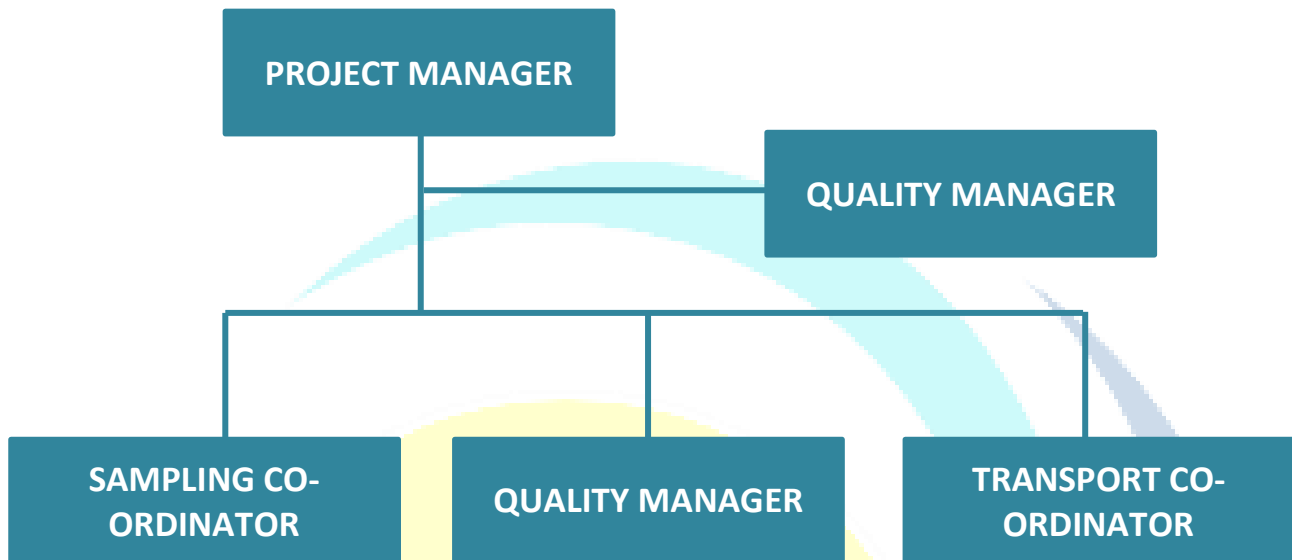
Our core competences in Sampling, Roving, Observing and Transportation are being continuously improved to be best IN quality.

VALUES

- Excellence in Customer Service
- High Integrity Level
- Social Responsibility
- Pioneering technology



ORGANOGRAM



SERVICES

We Offer:

- Sampling
- Roving and Observing
- Transportation



TARGET MARKET

- Mining Sector



SAFETY STATEMENT

It is a key strategy of our business to prevent harm to our employees and the environment by complying with all health, safety and environmental rules and regulations. We **WILL** continuously strive to improve safety and environmental performance in all our activities.

It is fundamental to our business to ensure that our facilities are safe and that we reduce the environmental impact of our products and processes. We do this by applying the appropriate workplace and environmental protection technologies and by closely monitoring our daily activities in order to prevent accidents, injuries, pollution and other harm to the environment.

The successful execution of this strategy is only possible if all of our employees share the responsibility for working safely and for properly implementing and maintaining our Environmental Management System.

SOCIAL RESPONSIBILITY

Rockom's integrated skills development and education drive will therefore play an important role in our BBBEE initiatives. This will be coupled with our community enhancement initiatives as shall be demonstrated by our community out-reach programmes.

The company is implementing positive measures to redress the disadvantages in employment experienced by black people, women as well as people living with disabilities, in order to assure their equitable representation in all occupational categories and levels in the workplace.

CONTACT DETAILS

OFFICE ADDRESS

Smuts Park Building
Office 25
Cnr. Smuts & Northey Street
Witbank
1035

T: (013) 656 1027

C: +27 82 440 6983

F: 086 597 9444

E: rockcomprojects@gmail.com

W: www.rockcom.co.za

Reg.no 2013/197401/07

Tax No. 956 300 1172